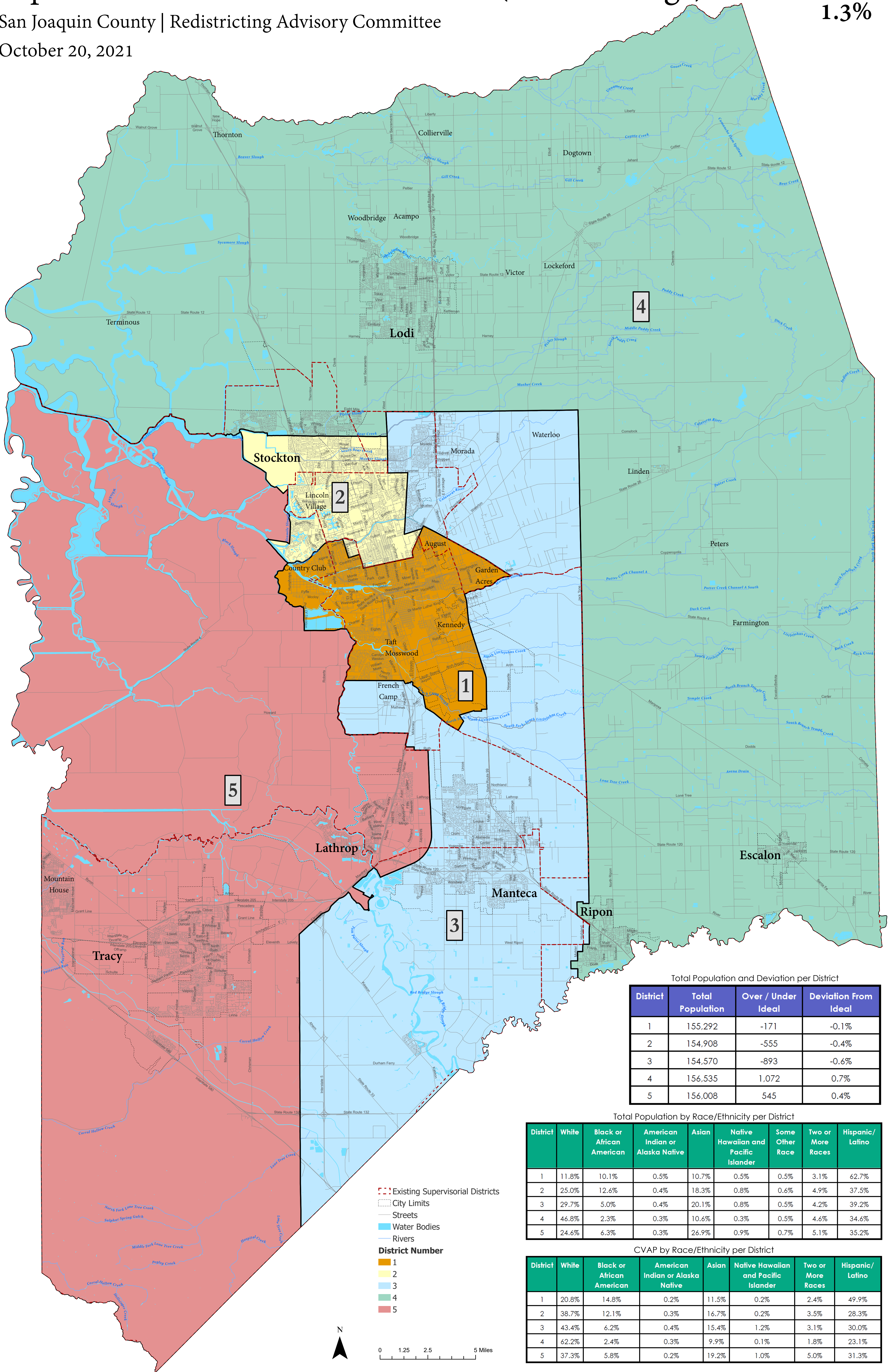


# Supervisory Districts Draft Plan D (Least Change)

San Joaquin County | Redistricting Advisory Committee

October 20, 2021

Total Deviation  
**1.3%**



Total Population and Deviation per District

District	Total Population	Over / Under Ideal	Deviation From Ideal
1	155,292	-171	-0.1%
2	154,908	-555	-0.4%
3	154,570	-893	-0.6%
4	156,535	1,072	0.7%
5	156,008	545	0.4%

Total Population by Race/Ethnicity per District

District	White	Black or African American	American Indian or Alaska Native	Asian	Native Hawaiian and Pacific Islander	Some Other Race	Two or More Races	Hispanic/Latino
1	11.8%	10.1%	0.5%	10.7%	0.5%	0.5%	3.1%	62.7%
2	25.0%	12.6%	0.4%	18.3%	0.8%	0.6%	4.9%	37.5%
3	29.7%	5.0%	0.4%	20.1%	0.8%	0.5%	4.2%	39.2%
4	46.8%	2.3%	0.3%	10.6%	0.3%	0.5%	4.6%	34.6%
5	24.6%	6.3%	0.3%	26.9%	0.9%	0.7%	5.1%	35.2%

CVAP by Race/Ethnicity per District

District	White	Black or African American	American Indian or Alaska Native	Asian	Native Hawaiian and Pacific Islander	Two or More Races	Hispanic/Latino
1	20.8%	14.8%	0.2%	11.5%	0.2%	2.4%	49.9%
2	38.7%	12.1%	0.3%	16.7%	0.2%	3.5%	28.3%
3	43.4%	6.2%	0.4%	15.4%	1.2%	3.1%	30.0%
4	62.2%	2.4%	0.3%	9.9%	0.1%	1.8%	23.1%
5	37.3%	5.8%	0.2%	19.2%	1.0%	5.0%	31.3%

- Existing Supervisory Districts
  - City Limits
  - Streets
  - Water Bodies
  - Rivers
- District Number**
- 1
  - 2
  - 3
  - 4
  - 5

